

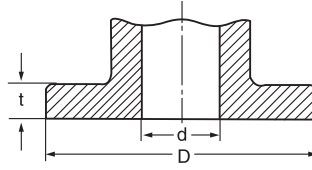


补充部分

Supplement

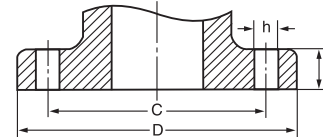
10FCHI/100FCHI 铸铁 Cast Iron

DN		D	t	d
inch	mm			
2	50	155	19.1	50
2½	65	175	19.1	65
3	80	185	19.1	80
4	100	210	22.2	100
5	125	250	22.2	125
6	150	280	22.2	150
8	200	330	25.4	200
10	250	400	25.4	250
12	300	445	28.6	300



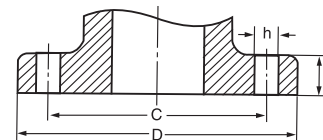
JIS 10K JIS B 2239-1996 铸铁 Cast Iron

DN		D	C	t	h	螺栓 Bolt	
inch	mm					No.	Size
3/8	10	90	65	14	15	4	M12
1/2	15	95	70	16	15	4	M12
3/4	20	100	75	18	15	4	M12
1	25	125	90	18	19	4	M16
1¼	32	135	100	20	19	4	M16
1½	40	140	105	20	19	4	M16
2	50	155	120	20	19	4	M16
2½	65	175	140	22	19	4	M16
3	80	185	150	22	19	8	M16
4	100	210	175	24	19	8	M16
5	125	250	210	24	23	8	M20
6	150	280	240	26	23	8	M20
8	200	330	290	26	23	12	M20
10	250	400	355	30	25	12	M22
12	300	445	400	32	25	16	M22
14	350	490	445	34	25	16	M22
16	400	560	510	36	27	16	M24
18	450	620	565	38	27	20	M24
20	500	675	620	40	27	20	M24
24	600	795	730	44	33	24	M30



BS10 Table E 铸铁 Cast Iron

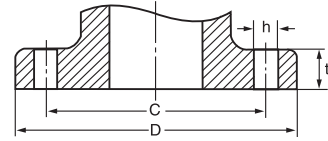
DN		D	C	t	h	螺栓 Bolt	
inch	mm					No.	Size
1/2	15	95	66.5	12.7	14	4	U½
3/4	20	102	73.0	12.7	14	4	U½
1	25	114	82.5	12.7	14	4	U½
1¼	32	121	87.5	15.9	14	4	U½
1½	40	133	98.5	15.9	14	4	U½
2	50	152	114.5	19.1	19	4	U5/8
2½	65	165	127.0	19.1	19	4	U5/8
3	80	184	146.0	19.1	19	4	U5/8
4	100	216	178.0	22.3	19	8	U5/8
5	125	254	209.5	22.3	19	8	U5/8
6	150	279	235.0	22.3	22	8	U¾
8	200	337	292.0	25.4	22	8	U¾
10	250	406	355.5	25.4	22	12	U¾
12	300	457	406.5	28.6	26	12	U7/8
14	350	527	470.0	31.8	26	12	U7/8



法兰尺寸 Flange Dimensions

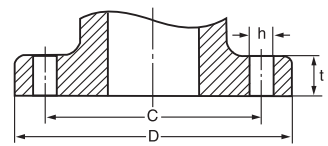
PN16 GB 9113.1 钢 Steel

DN		D	C	t	h	螺栓 Bolt	
inch	mm					No.	Size
3/8	10	90	60	14	14	4	M12
1/2	15	95	65	14	14	4	M12
3/4	20	100	75	16	14	4	M12
1	25	115	85	16	14	4	M12
1 1/4	32	140	100	18	18	4	M16
1 1/2	40	150	110	18	18	4	M16
2	50	165	125	20	18	4	M16
2 1/2	65	185	145	20	18	4	M16
3	80	200	160	20	18	8	M16
4	100	220	180	22	18	8	M16
5	125	250	210	22	18	8	M16
6	150	285	240	24	22	8	M20
8	200	340	295	24	22	12	M20
10	250	405	355	26	26	12	M24
12	300	460	410	28	26	12	M24
14	350	520	470	30	26	16	M24
16	400	580	525	32	30	16	M27
18	450	640	585	34	30	20	M27
20	500	715	650	36	33	20	M30
24	600	840	770	38	36	20	M33



PN16 ISO 7005-2:1988 & BS 4504 3.2:1989 铸铁 Cast Iron

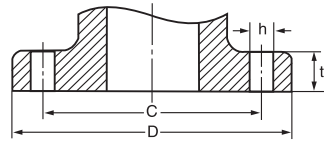
DN		D	C	t	h	螺栓 Bolt	
inch	mm					No.	Size
3/8	10	90	60	14	14	4	M12
1/2	15	95	65	14	14	4	M12
3/4	20	105	75	16	14	4	M12
1	25	115	85	16	14	4	M12
1 1/4	32	140	100	18	19	4	M16
1 1/2	40	150	110	18	19	4	M16
2	50	165	125	20	19	8(4)	M16
2 1/2	65	185	145	20	19	8	M16
3	80	200	160	22	19	8	M16
4	100	220	180	24	19	8	M16
5	125	250	210	26	19	8	M16
6	150	285	240	26	23	8	M20
8	200	340	295	30	23	12	M20
10	250	405	355	32	28	12	M24
12	300	460	410	32	28	12	M24
14	350	520	470	36	28	16	M24
16	400	580	525	38	31	16	M27
18	450	640	585	40	31	20	M27
20	500	715	650	42	34	20	M30
24	600	840	770	48	37	20	M33



() : BS

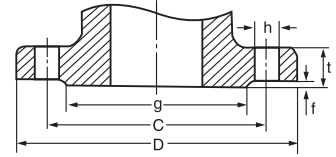
Class125 ASME/ANSI B16.1-1989 铸铁 Cast Iron

DN		D	C	t	h	螺栓 Bolt	
inch	mm					No.	Size
1	25	108	79.5	11.2	16	4	1/2
1 1/4	32	117	89.0	12.7	16	4	1/2
1 1/2	40	127	98.5	14.3	16	4	1/2
2	50	152	120.5	15.9	19	4	5/8
2 1/2	65	178	139.5	17.5	19	4	5/8
3	80	190	152.5	19.1	19	4	5/8
4	100	229	190.5	23.9	19	8	5/8
5	125	254	216.0	23.9	22	8	3/4
6	150	279	241.5	25.4	22	8	3/4
8	200	343	298.5	28.6	22	8	3/4
10	250	406	362.0	30.2	25	12	7/8
12	300	483	432.0	31.8	25	12	7/8
14	350	533	476.5	35.0	29	12	1
16	400	597	539.5	36.6	29	16	1
18	450	635	578.0	39.7	32	16	1 1/8
20	500	698	635.0	42.9	32	20	1 1/8
24	600	813	749.5	47.7	35	20	1 1/4



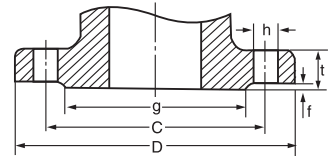
JIS 20K JIS B2239-1996 球墨铸铁 Ductile Iron

DN		D	C	g	t	f	h	螺栓 Bolt	
inch	mm							No.	Size
1/2	15	95	70	51	14	1	15	4	M12
3/4	20	100	75	56	16	1	15	4	M12
1	25	125	90	67	16	1	19	4	M16
1 1/4	32	135	100	76	18	2	19	4	M16
1 1/2	40	140	105	81	18	2	19	4	M16
2	50	155	120	96	18	2	19	8	M16
2 1/2	65	175	140	116	20	2	19	8	M16
3	80	200	160	132	22	2	23	8	M20
4	100	225	185	160	24	2	23	8	M20
5	125	270	225	195	26	2	25	8	M22
6	150	305	260	230	28	2	25	12	M22
8	200	350	305	275	30	2	25	12	M22
10	250	430	380	345	34	2	27	12	M24
12	300	480	430	395	36	3	27	16	M24
14	350	540	480	440	40	3	33	16	M30
16	400	605	540	495	46	3	33	16	M30
18	450	675	605	560	48	3	33	20	M30
20	500	730	660	615	50	3	33	20	M30
24	600	845	770	720	54	3	39	24	M36



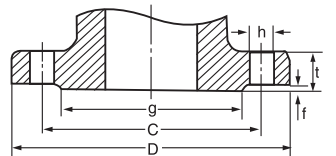
PN25 GB 9113.4 钢 Steel

DN		D	C	g	t	f	h	螺栓 Bolt	
inch	mm							No.	Size
1/2	15	95	65	46	14	2	14	4	M12
3/4	20	105	75	56	16	2	14	4	M12
1	25	115	85	65	16	3	14	4	M12
1 1/4	32	140	100	76	18	3	18	4	M16
1 1/2	40	150	110	84	18	3	18	4	M16
2	50	165	125	99	20	3	18	8	M16
2 1/2	65	185	145	118	22	3	18	8	M16
3	80	200	160	132	24	3	18	8	M16
4	100	235	190	156	24	3	22	8	M20
5	125	270	220	184	26	3	26	8	M24
6	150	300	250	211	28	3	26	8	M24
8	200	360	311	274	30	3	26	12	M24
10	250	425	370	330	32	3	30	12	M27
12	300	485	430	389	34	4	30	16	M27
14	350	555	490	448	38	4	33	16	M30
16	400	620	550	503	40	4	36	16	M33
18	450	670	600	548	42	4	36	20	M33
20	500	730	660	609	44	4	36	20	M33
24	600	845	770	720	46	4	39	20	M36



BS EN1092-2:1997 Part2 球墨铸铁 Ductile Iron

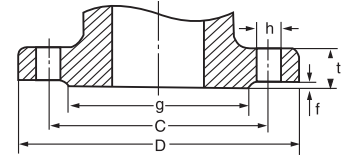
DN		D	C	g	t	f	h	螺栓 Bolt	
inch	mm							No.	Size
1/2	15	95	65	46	16*	2	14	4	M12
3/4	20	105	75	56	18*	2	14	4	M12
1	25	115	85	65	18*	3	14	4	M12
1 1/4	32	140	100	76	20*	3	19	4	M16
1 1/2	40	150	110	84	19	3	19	4	M16
2	50	165	125	99	19	3	19	4	M16
2 1/2	65	185	145	118	19	3	19	8	M16
3	80	200	160	132	19	3	19	8	M16
4	100	235	190	156	19	3	23	8	M20
5	125	270	220	184	19	3	28	8	M24
6	150	300	250	211	20	3	28	8	M24
8	200	360	311	274	22	3	28	12	M24
10	250	425	370	330	24.5	3	31	12	M27
12	300	485	430	389	27.5	4	31	16	M27
14	350	555	490	448	30	4	34	16	M30
16	400	620	550	503	32	4	37	16	M33
18	450	670	600	548	34.5	4	37	20	M33
20	500	730	660	609	36.5	4	37	20	M33
24	600	845	770	720	42	5	40	20	M36



* Cast Iron

Class 150 ASME/ANSI B16.5-1996 钢 Steel

DN		D	C	g	t	f	h	螺栓 Bolt	
inch	mm							No.	Size
1/2	15	89	60.5	35	11.2	1.6	16	4	U 1/2
3/4	20	98	70.0	43	11.2	1.6	16	4	U 1/2
1	25	108	79.5	51	11.2	1.6	16	4	U 1/2
1 1/4	32	117	89.0	64	12.7	1.6	16	4	U 1/2
1 1/2	40	127	98.5	73	14.3	1.6	16	4	U 1/2
2	50	152	120.5	92	15.9	1.6	19	4	U 5/8
2 1/2	65	178	139.5	105	17.5	1.6	19	4	U 5/8
3	80	190	152.5	127	19.1	1.6	19	4	U 5/8
4	100	229	190.5	157	23.9	1.6	19	8	U 5/8
5	125	254	216.0	186	23.9	1.6	22	8	U 3/4
6	150	279	241.5	216	25.4	1.6	22	8	U 3/4
8	200	343	298.5	270	28.6	1.6	22	8	U 3/4
10	250	406	362.0	324	30.2	1.6	25	12	U 7/8
12	300	483	432.0	381	31.8	1.6	25	12	U 7/8
14	350	533	476.5	413	35.0	1.6	29	12	U 1
16	400	597	539.5	470	36.6	1.6	29	16	U 1
18	450	635	578.0	533	39.7	1.6	32	16	U 1 1/8
20	500	698	635.0	584	42.9	1.6	32	20	U 1 1/8
24	600	813	749.5	692	47.7	1.6	35	20	U 1 1/4



Class 300 ASME/ANSI B16.5-1996 钢 Steel

DN		D	C	g	t	f	h	螺栓 Bolt	
inch	mm							No.	Size
1/2	15	95	66.5	35	14.3	1.6	16	4	U 1/2
3/4	20	117	82.5	43	15.9	1.6	19	4	U 5/8
1	25	124	89.0	51	17.5	1.6	19	4	U 5/8
1 1/4	32	133	98.5	64	19.1	1.6	19	4	U 5/8
1 1/2	40	156	114.5	73	20.7	1.6	22	4	U 3/4
2	50	165	127.0	92	22.3	1.6	19	8	U 5/8
2 1/2	65	190	149.0	105	25.4	1.6	22	8	U 3/4
3	80	210	168.0	127	28.6	1.6	22	8	U 3/4
4	100	254	200.0	157	31.8	1.6	22	8	U 3/4
5	125	279	235.0	186	35.0	1.6	22	8	U 3/4
6	150	318	270.0	216	36.6	1.6	22	12	U 3/4
8	200	381	330.0	270	41.3	1.6	25	12	U 7/8
10	250	444	387.5	324	47.7	1.6	29	16	U 1
12	300	521	451.0	381	50.8	1.6	32	16	U 1 1/8
14	350	584	514.5	413	54.0	1.6	32	20	U 1 1/8
16	400	648	571.5	470	57.2	1.6	35	20	U 1 1/4
18	450	711	628.5	533	60.4	1.6	35	24	U 1 1/4
20	500	775	686.0	584	63.5	1.6	35	24	U 1 1/4
24	600	914	813.0	692	69.9	1.6	41	24	U 1 1/2

